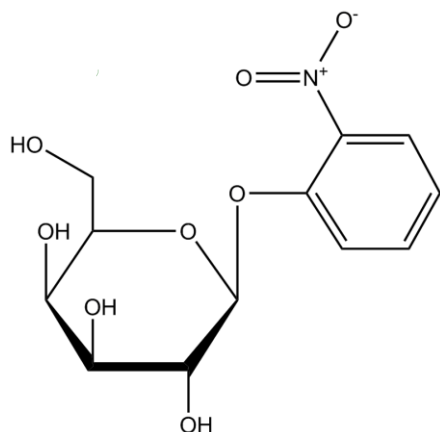


## Product Information Sheet

**N604**

### ***o*-Nitrophenyl- $\beta$ -D-galactopyranoside (ONPG)**



Synonym: 2-nitrophenyl- $\beta$ -D-galactoside

CAS: 369-07-3

Formula: C<sub>12</sub>H<sub>15</sub>NO<sub>8</sub>

Molecular Wt: 301.3

#### Properties

Form: Powder

Appearance: White to Off-white

Application: Molecular Biology; Chromophore

Solubility: DMSO; Slightly soluble in Water

Typical Working Concentration: Varies based on application, should be determined by end user.

Storage Temp: -20 to 0°C

Other Notes:  $\lambda$  max = 420 nm

#### Application Notes

ONPG is cleaved by  $\beta$ -galactosidase (e.g. lac Z) to yield galactose (colorless) and *o*-nitrophenol (yellow). The  $\lambda$  max for *o*-nitrophenol is 420 nm.

**PhytoTechnology Laboratories®**

P.O. Box 12205 • Shawnee Mission, KS • 66282-2205

Phone: 1-913-341-5343 or 1-888-749-8682 (U.S. Only) Fax: 1-913-341-5442 or 1-888-449-8682 (U.S. Only)

Web Site: [www.phytotechlab.com](http://www.phytotechlab.com)

© 2014 PhytoTechnology Laboratories®